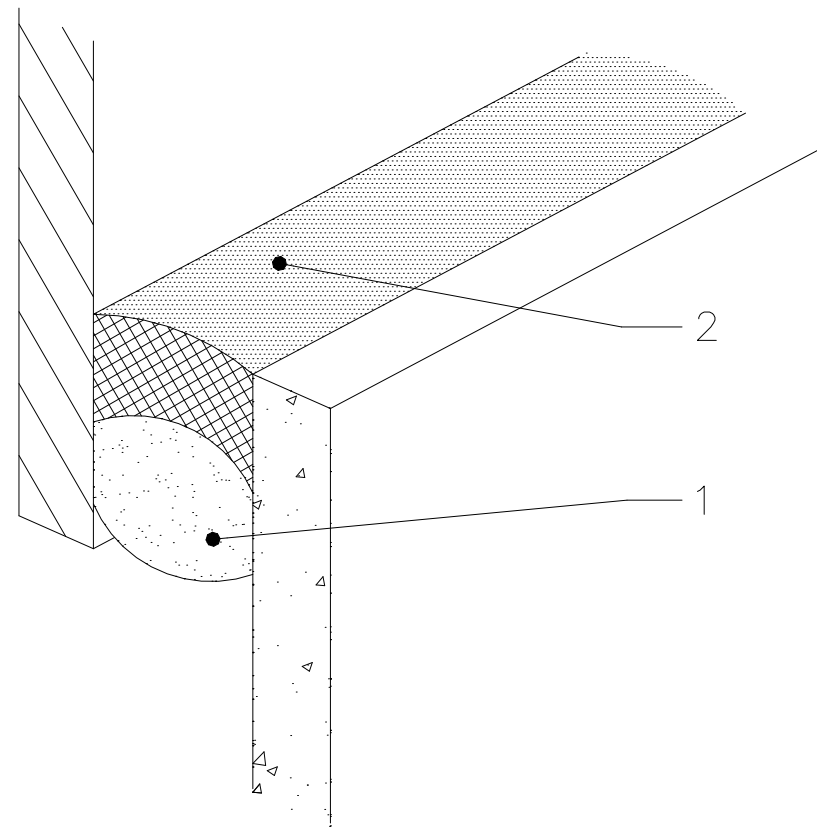


NOTE

CONSULT SIKA TECHNICAL
DEPARTMENT IF ADHESION
PROMOTING PRIMERS ARE
REQUIRED

1. CLOSED CELL POLYETHYLENE
BACKING ROD

2. SIKAFLEX SEALANT



SIKA LIMITED
TYPICAL LAP JOINT
(ACCOMMODATES LARGE MOVEMENT)
SB003